

2025 RED ROCK JAMBOREE RIDES

Coordinate your rides with your family and friends. If you want to ride with friends, it's best to register everyone at the same time. Register early to get on your preferred rides. The BLM limits the number of RIDERS that can be in on a ride. All passengers must register for rides. Once the limit of riders has been reached, the ride is closed. Make sure that the ride you want has enough open spots for your whole group BEFORE you register. Rides cannot be changed at the Jamboree. Ride distances are approximate and may change due to conditions.

NOTE: RIDE NUMBERS HAVE CHANGED FROM LAST YEAR

Ride 1 – Coral Pink Sand Dunes – FRIDAY ONLY



Advanced Ride – Trailer Necessary

Limited to Side by Sides with Turbo Engines

Orange Safety Flag Required

Full Day Ride – 30 miles

Staging Area: Coral Pink Sand Dunes State Park

MEET AT STAGING AREA AT 8:45AM - UNLOADED AND READY TO RIDE

Meet your guides at Coral Pink Sand Dunes State Park Staging Area. This adrenaline-fueled ride will provide a more challenging and faster-paced experience, featuring sand dunes, winding washes, and challenging deep whoops. The day kicks off with a quick Coral Pink orientation and driver safety session, ensuring you're ready for the excitement ahead. Then spend hours carving through the dunes, exploring hidden corners, and perhaps catching a glimpse of Sasquatch. A hotdog lunch provides a much-needed break before you take on the ultimate challenge—scaling Competition Hill.

DIRECTIONS from Parry Lodge:

US 89 N to Hancock Road - 7.8 miles

Left on Hancock Road to End - 9.5 miles

Left on Sand Dunes Road

Travel 2.9 miles on Sand Dunes Road

Left into Coral Pink Sand Dunes State Park

GPS: N 37.03750

W -112.73213

Travel Time 35 Minutes



Ride 2 – Cottonwood Canyon ****NEW RIDE****



Moderate Ride – Trailer Necessary

Full Day Ride – 75 miles

Staging Area: Cottonwood Staging Area

MEET AT STAGING AREA AT 8:45AM - UNLOADED AND READY TO RIDE

New ride for 2025!! You will meet your guides at the Cottonwood Staging Area (3 miles E of the Paria River) to begin this ride. This ride will take you up Cottonwood Road through the Grand Staircase Escalante National Monument and will pass by several areas of interest on the way to the famous Grosvenor Arch. This is a very scenic ride with views of the Cockscomb with its incredible colorful rock formations, along with local history and mystery added to make this ride fun and interesting. Much of the ride is on an improved road, and due to the length of the ride, will move at a faster pace.

DIRECTIONS from Parry Lodge:

US 89 S (toward Page, AZ) to Cottonwood Staging Area - 46.5 miles

Left into Cottonwood Staging Area

GPS: N 37.10524

W -111.84701

Travel Time 55 Minutes



Ride 3 – Dianas Throne

Extreme Ride – Trailer Necessary

Full Day Ride – 45 miles



Staging Area: Peekaboo Staging Area

MEET AT STAGING AREA AT 8:45AM - UNLOADED AND READY TO RIDE

Meet your guides at the Peekaboo Staging Area. This is an extreme ride due to the crossing at Devil's Throat with steep slick rock ascents and descents. We continue our ride to the west as we explore a spectacular slot canyon on private property. The rest of the ride is rather moderate with spectacular views of Zion and the White Cliffs beyond Dianas Throne. Continuing on, we will make our way to Pucker Pass and on to Red Knoll to enjoy an incredible view of the surrounding Coral Pink Sand Dunes area. We will conclude our ride by returning to the Peekaboo staging area.

DIRECTIONS from Parry Lodge:

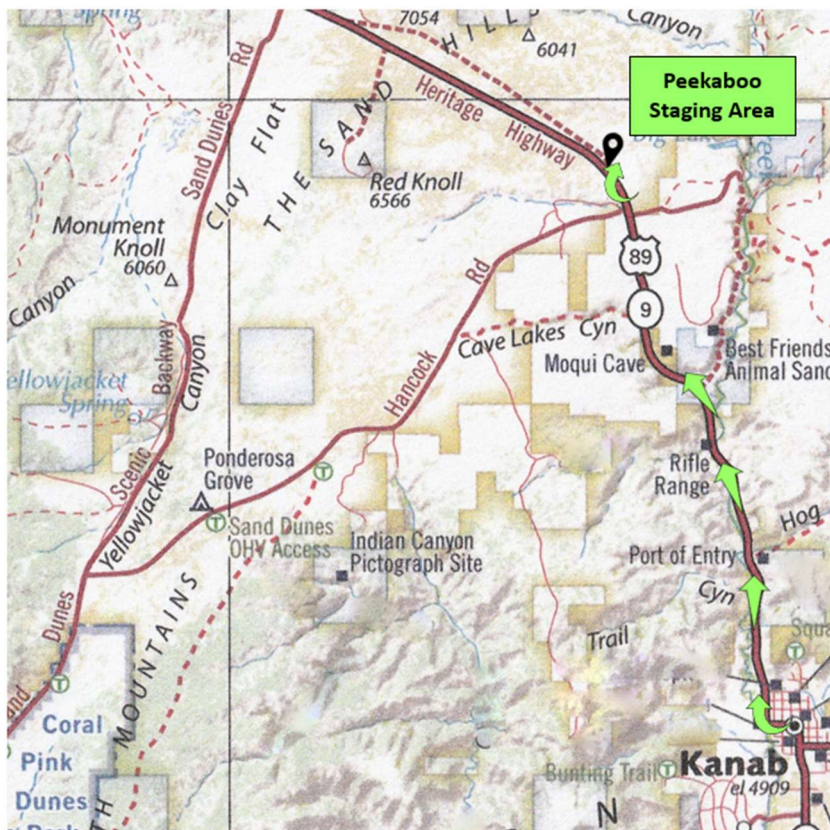
US 89 N – 8.6 miles

Right into Peekaboo Staging Area

GPS: N 37.15420

W -112.57424

Travel Time 15 Minutes



Ride 4 – Honeymoon Trail



Moderate Ride – Trailer Necessary

Full Day Ride – 40 miles

Staging Area: Seaman Wash Staging Area

MEET AT STAGING AREA AT 8:45AM - UNLOADED AND READY TO RIDE

You will meet your guides at the Seaman Wash Staging Area. From our staging area we will travel south to the Honeymoon Trail Monument. Then we will travel up the dugway to Buckskin Mountain where we will join the old pioneer Honeymoon Trail. The Honeymoon Trail is the route Mormon pioneers would take from Arizona to get to the St. George Temple to be married. We will view the geological wonder of Eagle Sink and then pick up the Great Western Trail/Honeymoon Trail traveling north to Petrified Hollow before returning to our staging area.

DIRECTIONS from Parry Lodge:

US 89 S (toward Page, AZ) to Seaman Wash Staging Area - 15.8 miles

Left into Seaman Wash Staging Area

GPS: N 37.04082

W -112.25185

Travel Time 20 Minutes



Ride 5 - Hoodoo Run



Moderate Ride - Trailer Necessary

Full Day Ride – 45 miles

Staging Area: Crocodile Staging Area

MEET AT STAGING AREA AT 8:45AM - UNLOADED AND READY TO RIDE

You will meet your guides at the Crocodile/Johnson Canyon Staging Area. Follow our guides to the Cowboy Cave Petroglyphs before circling around to the Red Pinnacles. Cutler Point is a sight to see! Then we'll explore Brown Canyon and the amazing hoodoos! Next, we'll cross John R Flat to the left-hand fork of Hog Canyon to take in the views at Weigh Station Point. On the ride back to the Crocodile/Johnson Canyon staging area we will stop and see some Native American water glyphs. Learn about these incredible water glyphs and why they were key to Native American survival in the Southwest.

DIRECTIONS from Parry Lodge:

US 89 S (toward Page, AZ) to
Johnson Canyon Rd - 9.5 miles

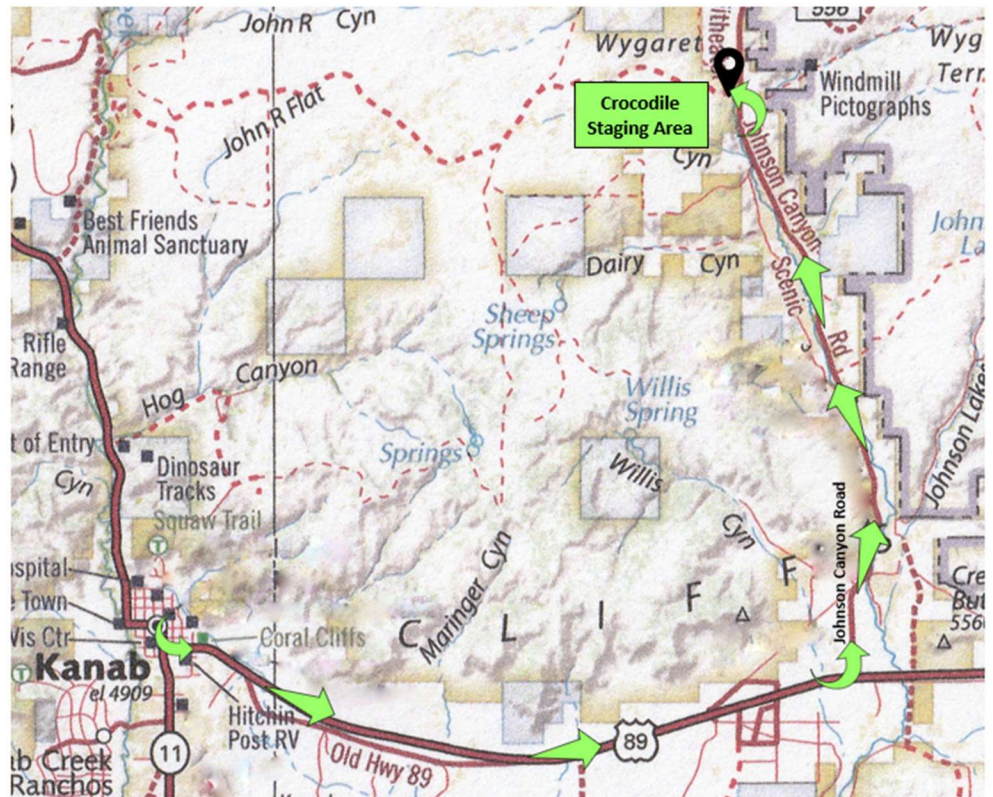
Left on Johnson Canyon Road
Travel 7.8 miles on Johnson
Canyon Rd

Left into Crocodile Staging Area

GPS: N 37.14369

W -112.39344

Travel Time 25 Minutes



Ride 6 - Island In The Sky



Advanced Ride - No Trailering Necessary**

- Limited to Side by Sides 60" Minimum Width

Full Day Ride – 40 miles

Staging Area: Jacob Hamblin Park

MEET AT STAGING AREA AT 8:45AM - UNLOADED AND READY TO RIDE

You will meet your guides at Jacob Hamblin Park in Kanab. This ride will take you to the Mansard petroglyphs. The petroglyphs are accessed by foot via a short, rocky climb. These petroglyphs are very large in size, unique, and are different than most because they are on the ground instead of high up on canyon walls. Watch where you step to help us respect and protect these beautiful petroglyphs. Along the way you will take in the incredible scenic views of Kanab and the surroundings. After the petroglyphs, you will ride to a scenic view overlooking Johnson Canyon before taking a quick jaunt over to the TV towers for another spectacular view of Kanab. **Beware, you will encounter some adrenaline pumping moments in the rocky, off-camber areas on this ride.**

No trailering necessary. This ride includes a 72" maximum width bridge over Kanab Creek. Vehicles wider than 72" will need to continue 0.9 miles on Route 89N to Hog Canyon and wait for your group to reassemble.

DIRECTIONS from Parry Lodge:

N 100 E (By Parry Lodge)

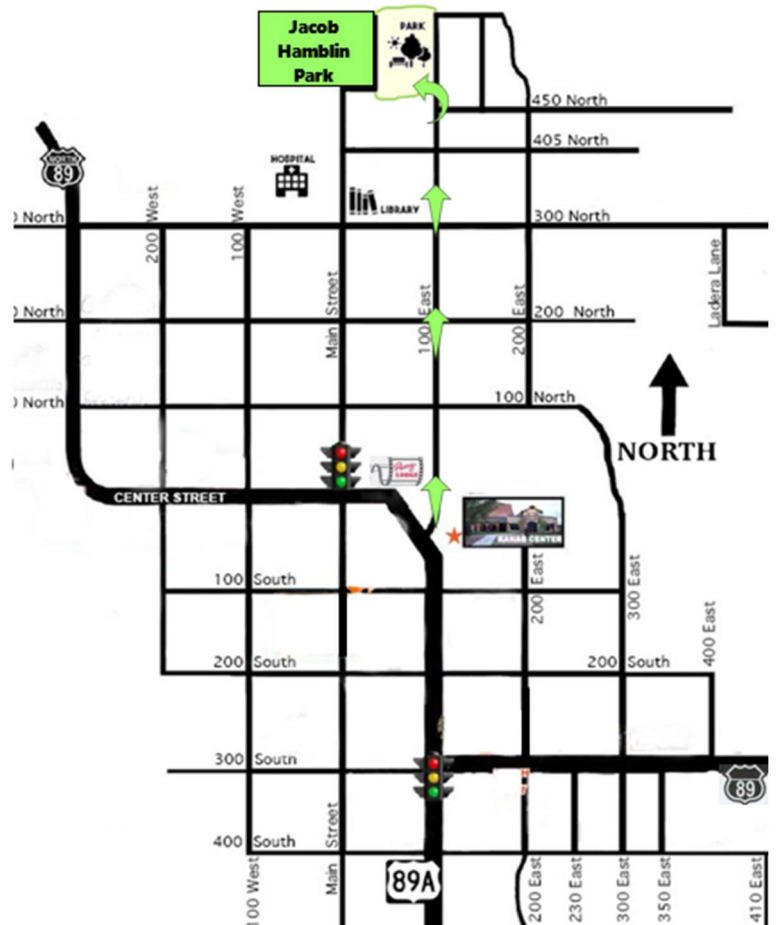
Travel **0.5 miles** on **N 100 E**

Left into **Jacob Hamblin Park**, 566 N 100 E

GPS: **N 37.05676**

W -112.52651

Travel Time 5 Minutes



Ride 7 – Kitchen Corral ****NEW RIDE****



Moderate Ride – Trailer Necessary

Full Day Ride – 65 miles

Staging Area: Kitchen Corral Staging Area

MEET AT STAGING AREA AT 8:45AM - UNLOADED AND READY TO RIDE

New ride for 2025!! You will meet your guides at the Kitchen Corral Staging Area. Experience miles of natural beauty as your guide leads you through the Grand Staircase Escalante National Monument. The ride will follow a portion of the Great Western Trail with spectacular views of the White and Pink Cliffs. You will see many interesting rock formations and incredible views of the Paria River Canyon. Our guides will tell you about some of the local history and lead you along this route for a great day of adventure. This trail has something for everyone – faster paced graded roads, sandy sections, and possibly even some mud! You will definitely want your camera for this ride!

DIRECTIONS from Parry Lodge:

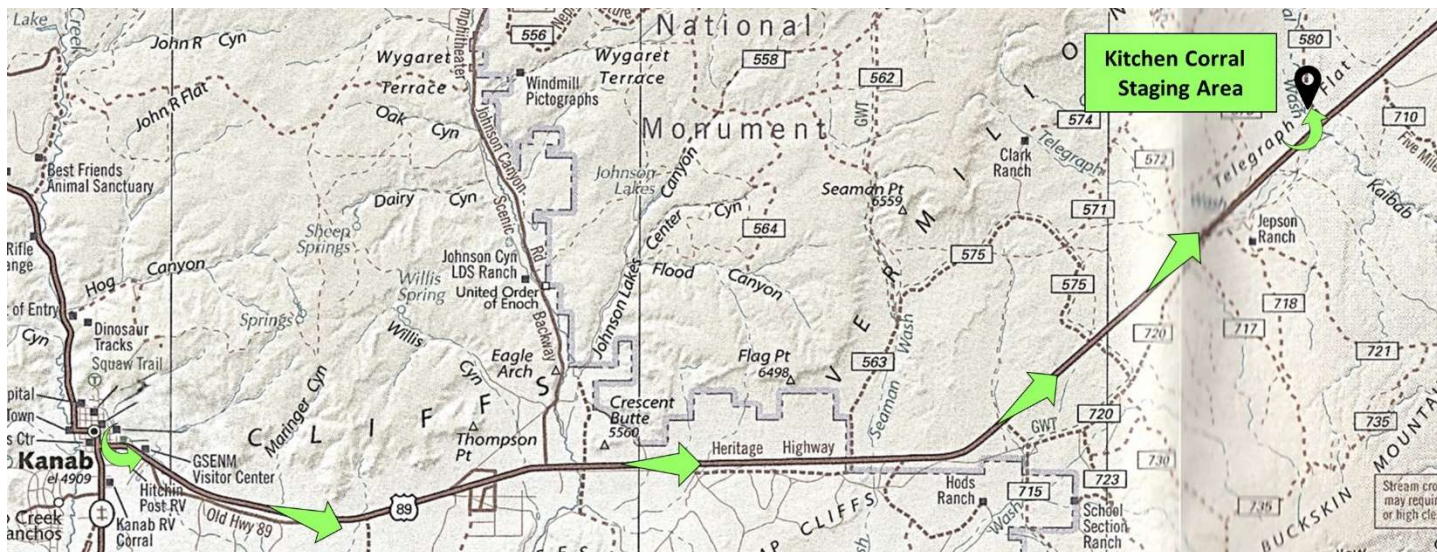
US 89 S (toward Page, AZ) to Kitchen Corral Staging Area - 27.4 miles

Left into Kitchen Corral Staging Area (just past Mile Marker 37)

GPS: N 37.13337

W -112.08720

Travel Time 35 Minutes



Ride 8 - Peekaboo Slot Canyon – RED Group

Peekaboo Slot Canyon has been the most popular ride in past years. This year we are doing TWO Peekaboo Slot Canyon rides Each Day.

Moderate Ride – Trailer Necessary

Full Day Ride – 35 miles

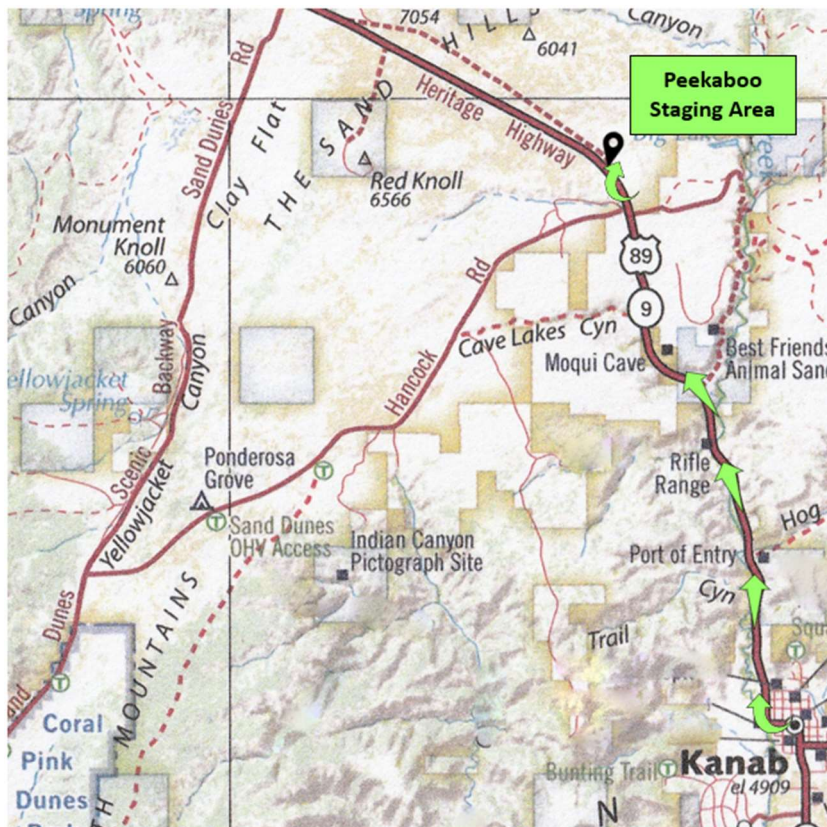
Staging Area: Peekaboo Staging Area

MEET AT STAGING AREA AT 8:45AM –

UNLOADED AND READY TO RIDE

Be sure to locate the RED group

Meet your guides at the Peekaboo Staging Area. There are many great photo opportunities along this mostly sandy ride as you view the natural beauty of the White Cliffs in the Grand Staircase Escalante National Monument. You will have the opportunity to experience the short .7 mile round trip easy hike through a 2-part slot canyon. If you haven't experienced many slot canyons, this is well worth the walk. While in Peekaboo Slot Canyon your guide will point out the Moqui steps carved into the sandstone that were used by the Native Americans to climb up the sheer rock face. The ride will also take you to the White Wave for a short hike to some unique petroglyphs, and to Red Knoll for more great views of the spectacular scenery in this area.



DIRECTIONS from Parry Lodge:

US 89 N – 8.6 miles

Right into Peekaboo Staging Area

GPS: N 37.15420

W -112.57424

Travel Time 15 Minutes

Ride 9 - Peekaboo Slot Canyon - BLUE Group

Peekaboo Slot Canyon has been the most popular ride in past years. This year we are doing TWO Peekaboo Slot Canyon rides Each Day. The BLUE Group will ride the trail in reverse.

Moderate Ride – Trailer Necessary

Full Day Ride – 35 miles

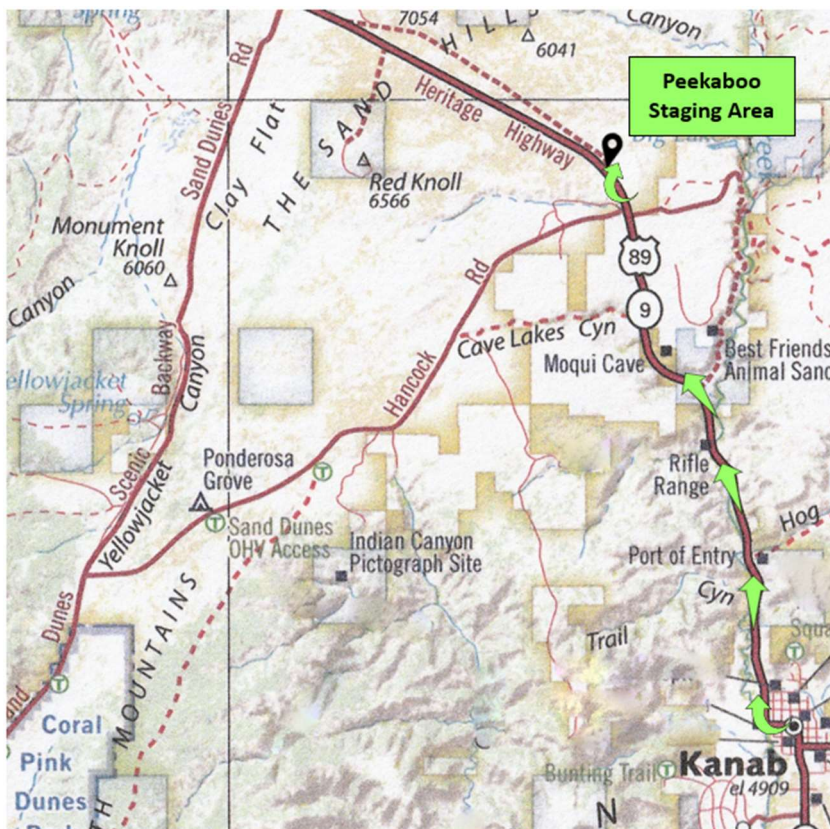
Staging Area: Peekaboo Staging Area

MEET AT STAGING AREA AT 8:45AM –

UNLOADED AND READY TO RIDE

Be sure to locate the BLUE group

Meet your guides at the Peekaboo Staging Area. There are many great photo opportunities along this mostly sandy ride as you view the natural beauty of the White Cliffs in the Grand Staircase Escalante National Monument. You will have the opportunity to experience the short .7 mile round trip easy hike through a 2-part slot canyon. If you haven't experienced many slot canyons, this is well worth the walk. While in Peekaboo Slot Canyon your guide will point out the Moqui steps carved into the sandstone that were used by the Native Americans to climb up the sheer rock face. The ride will also take you to the White Wave for a short hike to some unique petroglyphs, and to Red Knoll for more great views of the spectacular scenery in this area.



DIRECTIONS from Parry Lodge:

US 89 N – 8.6 miles

Right into Peekaboo Staging Area

GPS: N 37.15420

W -112.57424

Travel Time 15 Minutes

Ride 10 – Poverty



Advanced Ride - Trailer Necessary

Full Day Ride – 35 miles

Staging Area: Poverty Staging Area

MEET AT STAGING AREA AT 8:45AM - UNLOADED AND READY TO RIDE

For this ride, you will meet your guides 30 miles northwest of Kanab at the Poverty Staging Area. From the staging area we will drop down the winding switchbacks through the beautiful White Cliffs with spectacular views of the East Fork of the Virgin River Gorge. Look across to the Barracks Overlook and Harris Mountain. For those that are interested, you can take a short, steep, hike down to the Virgin River to see a sword carved in the stone and a Native American Petroglyph Panel. We will travel on a 2-track road to the boundary of Zion National Park. Take in the views, look for the mule deer, and don't forget your camera!

DIRECTIONS from Parry Lodge:

US 89 N to Mt Carmel-17.3 miles

Left on RT 9 toward Zion NP

Travel 9.7 miles on RT 9

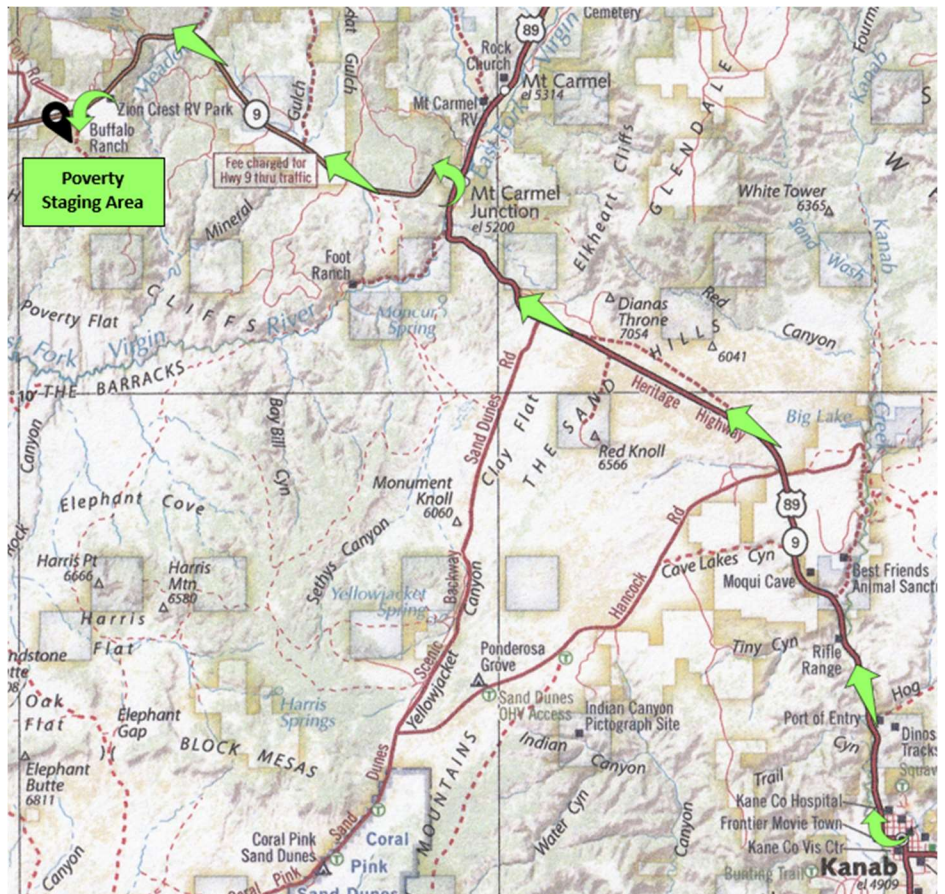
Left on Poverty Rd

Note: Parking area is approximately 1 mile in on dirt road

GPS: N 37.24222

W -112.81346

Travel Time 40 Minutes



Ride 11 – Savage Point – Thursday and Saturday Only



Extreme Ride - Experienced Riders Only

- Limited to Side by Sides 60" Minimum Width
- Winch Suggested
- No Trailering Necessary**

Full Day Ride – 30 miles

Staging Area: Jacob Hamblin Park

MEET AT STAGING AREA AT 8:45AM - UNLOADED AND READY TO RIDE

You will meet your guides at Jacob Hamblin Park in Kanab. From the Park you will ride to the Hog Canyon OHV Trail System. We'll start our ride by going up to the Kanab City Overlook and then over to the White Pinnacles. From there we ride to the "Big Hill" (you'll see why it has this name), down the Mosdell Hill and then out to Savage Point for lunch. We'll return to Hog Canyon staging area by way of the TV Towers for yet another spectacular view of Kanab.

No trailering necessary. This ride includes a 72" maximum width bridge over Kanab Creek. Vehicles wider than 72" will need to continue 0.9 miles on Route 89N to Hog Canyon and wait for your group to reassemble.

DIRECTIONS from Parry Lodge:

N 100 E (By Parry Lodge)

Travel **0.5 miles on N 100 E**

Left into **Jacob Hamblin Park**, 566 N 100 E

GPS: N **37.05676**

W **-112.52651**

Travel Time 5 Minutes



Ride 12 – Seaman Wash



Advanced Ride – Trailer Necessary

Full Day Ride – 50 miles

Staging Area: Seaman Wash Staging Area

MEET AT STAGING AREA AT 8:45AM - UNLOADED AND READY TO RIDE

You will meet your guide at the Seaman Wash Staging Area. From the staging area we will begin this ride by traveling across Petrified Hollow, which was named for all the petrified wood discovered here. From there you will travel up the narrow and rocky Fin Little Canyon and out to Nephi Point where you will have a spectacular view of the surrounding area. While traveling through Snake Canyon, our guides will stop along the way to show you some rock formations that sure look like the head of an elephant! Nephi Pasture lays below the impressive and scenic White Cliffs of Timber Mountain and provides some great photos. On the way back to the staging area, we will take you past the Button Cabin, which is one of the last remaining cowboy cabins in the Grand Staircase Escalante National Monument, and on to Inchworm Arch. The last section of this ride is down Seaman Wash, which has some fascinating rock formations to view and photograph before arriving back at your vehicles.

DIRECTIONS from Parry Lodge:

US 89 S (toward Page, AZ) to **Seaman Wash Staging Area - 15.8 miles**

Left into Seaman Wash Staging Area

GPS: **N 37.04082**

W -112.25185

Travel Time 20 Minutes



Ride 13 – South Fork Indian Canyon



Moderate Ride – Trailer Necessary

Full Day Ride – 45 miles

Staging Area: Clay Flat Staging Area

MEET AT STAGING AREA AT 8:45AM - UNLOADED AND READY TO RIDE

You will meet your guides at the Clay Flat Staging Area. From the staging area the ride will go over Harris Mountain where you will see spectacular views of Zion National Park and the East Fork of the Virgin River Gorge. We will continue our ride over the Sand Dunes to Sand Spring and on to the South Fork Indian Canyon Pictograph site where we will have lunch. Take a hike down a steep trail to explore amazing Native American pictographs. The hike is 3/4 mile round trip. The ride will then return to the Clay Flat staging area along a different scenic trail.

DIRECTIONS from Parry Lodge:

US 89 N to Sand Dunes Road-13.3 miles

Left on Sand Dunes Road

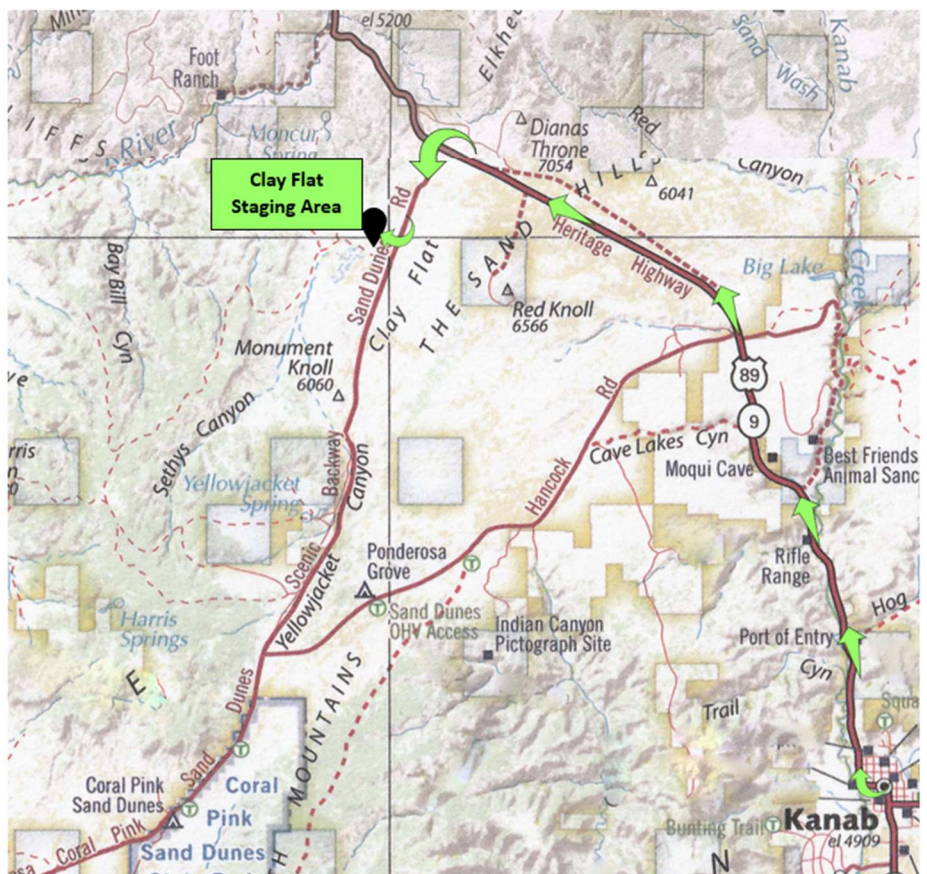
Travel 1.9 miles on Sand Dunes Road

Right to Clay Flat Staging Area

GPS: N 37.16154

W -112.66684

Travel Time 25 Minutes



Ride 14 – Toms Canyon – Thursday & Friday Only

Extreme Ride - Expert, Experienced Riders Only

- Limited to Side by Sides 60" Minimum Width
- Winch Suggested
- No Trailering Necessary**

Full Day Ride – 25 miles

Staging Area: Jacob Hamblin Park

MEET AT STAGING AREA AT 8:45AM - UNLOADED AND READY TO RIDE

You will meet your guides at Jacob Hamblin Park in Kanab. From the Park you will ride to the Hog Canyon OHV Trail System. This is the roughest and most extreme trail in the Hog Canyon OHV System! Join us for this exciting ride! Take in the incredible views of the canyons and Kanab City from Savage Point. Expect steep waterfalls, off camber trails, a lot of slick rock, very steep ascents and descents. Some obstacles have a bypass option for those looking for an alternative, but not all.

Anticipate possible body damage.



No trailering necessary. This ride includes a 72" maximum width bridge over Kanab Creek. Vehicles wider than 72" will need to continue 0.9 miles on Route 89N to Hog Canyon and wait for your group to reassemble.

DIRECTIONS from Parry Lodge:

N 100 E (By Parry Lodge)

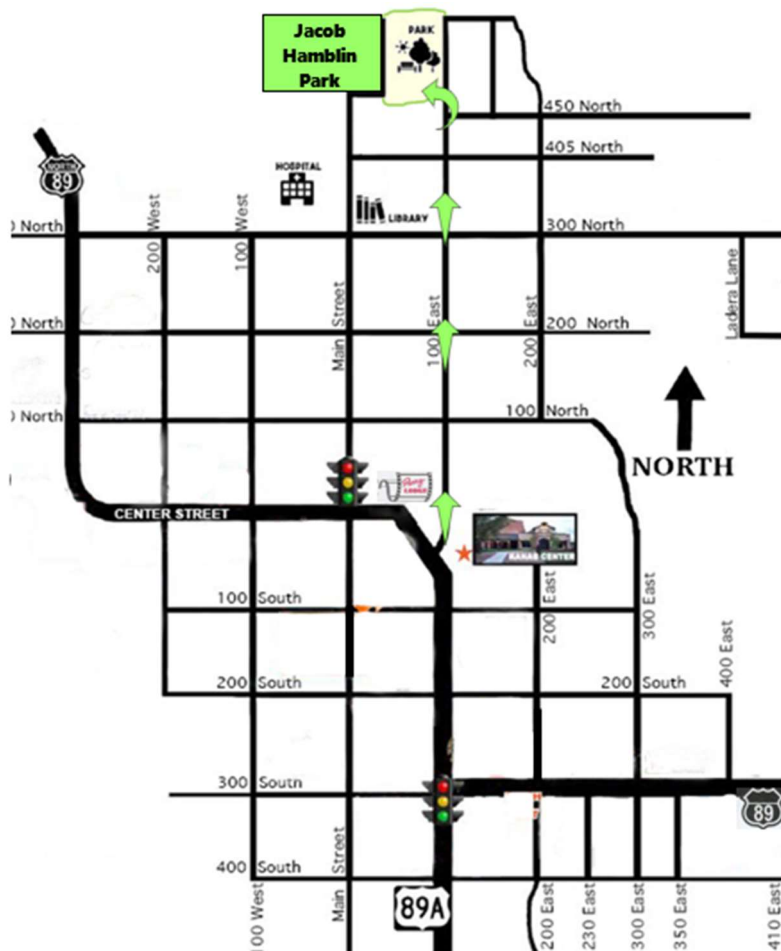
Travel **0.5 miles on N 100 E**

Left into Jacob Hamblin Park, 566 N 100 E

GPS: N **37.05676**

W **-112.52651**

Travel Time 5 Minutes



Ride 15 – Warriors Walk

Moderate Ride – Trailer Necessary

Full Day Ride – 40 miles

Staging Area: Elephant Cove Staging Area

MEET AT STAGING AREA AT 8:45AM - UNLOADED AND READY TO RIDE

You will meet your guide at the Elephant Cove Staging Area to begin this scenic ride. Along this mostly sandy route you will experience the spectacular views of Zion National Park, Canaan Mountain, and Elephant Butte. You will stop at the Warriors Walk, which is a long rock-lined path with seemingly no destination or explanation. While there, learn about some of the local history pertaining to the Canaan Mountain Wilderness Area and the Shunesburg Mail Drop. Along this ride you will have the opportunity to visit the Moccasin Mountain Dinosaur Track Site. This area contains one of the highest diversity of fossil vertebrate tracks for the Early Jurassic time period in North America, and has been preserved for approximately 180 million years.

DIRECTIONS from Parry Lodge:

US 89 N to Hancock Road - 7.8 miles

Left on Hancock Road to End - 9.5 miles

Left on Sand Dunes Road

Travel 7.4 miles on Sand Dunes Road (Go Past Coral Pink State Park)

Right into Elephant Cove Staging Area

GPS: N 37.02459

W -112.80263

Travel Time 45 Minutes

